

# The Massachusetts Regional Conservation Forum



*Wellesley College*  
*February 8, 2019*

# PARTNERING WITH UMASS-AMHERST

**Sarah Wells**

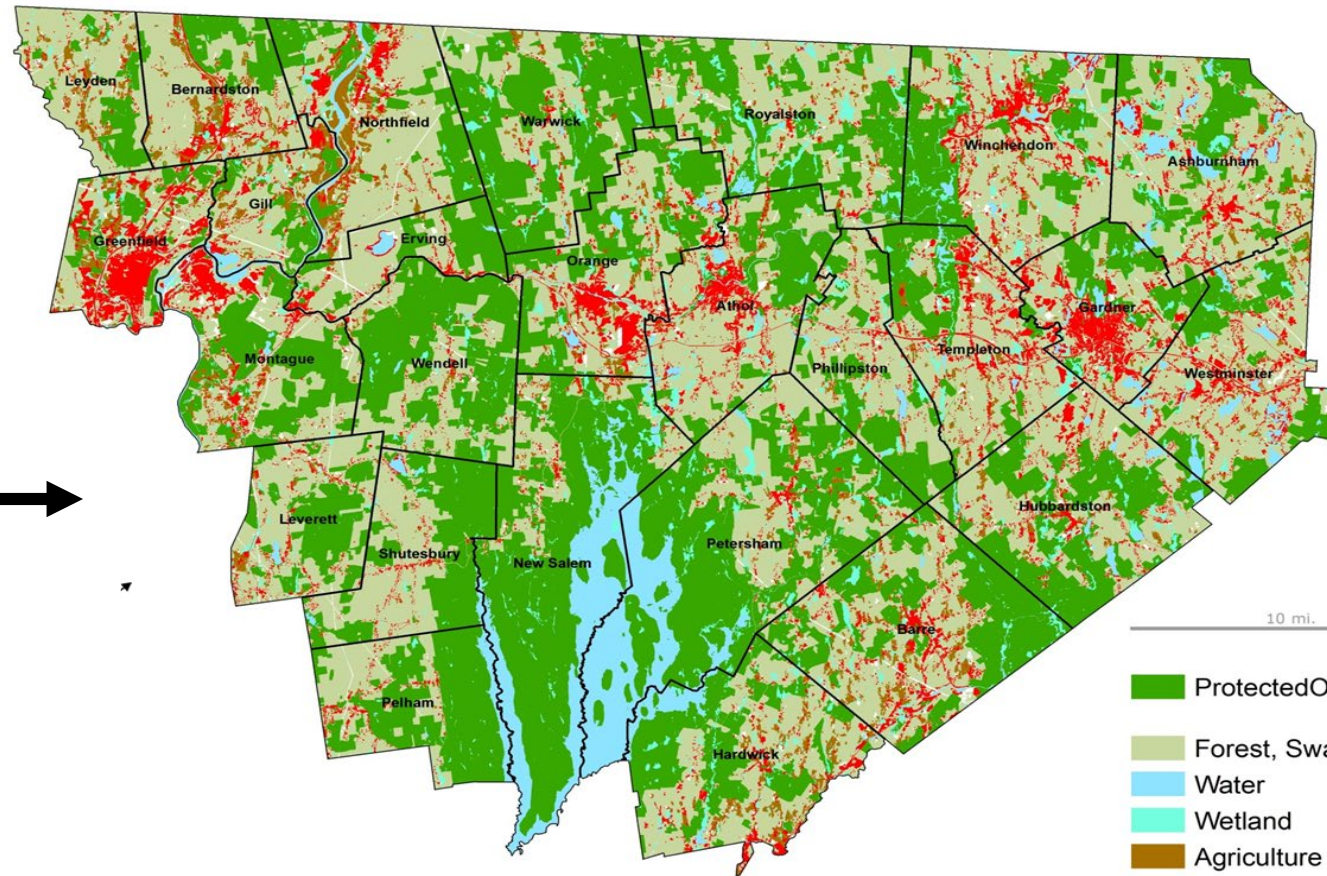
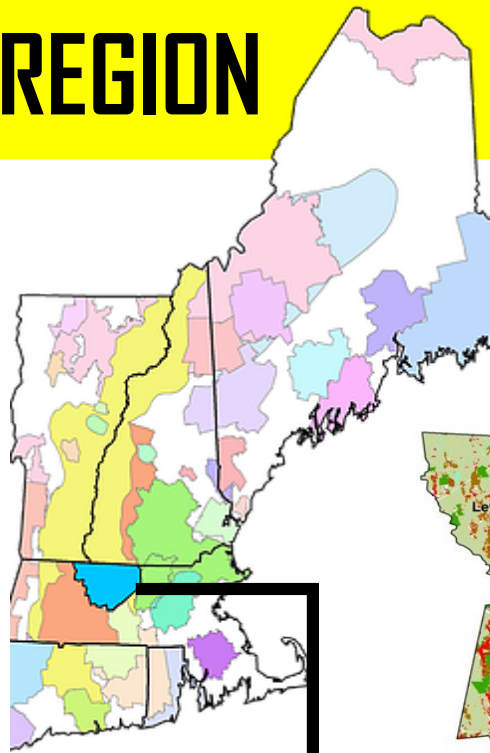
**North Quabbin Regional Landscape Partnership**

**Mount Grace Land Conservation Trust**

*February 8, 2019*



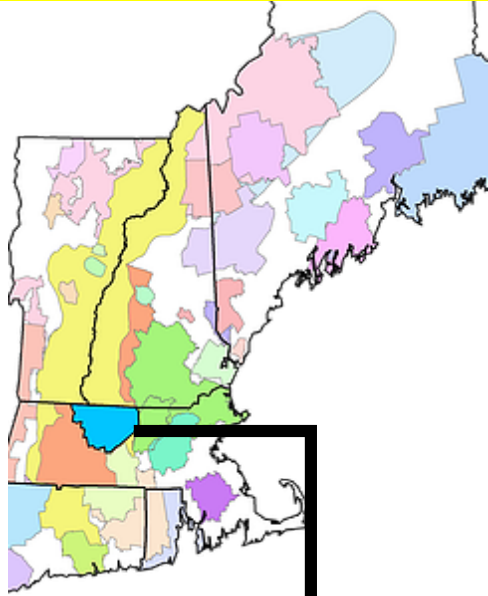
# REGION



- ProtectedOpenSpace
- Forest, Swamp
- Water
- Wetland
- Agriculture
- Developed

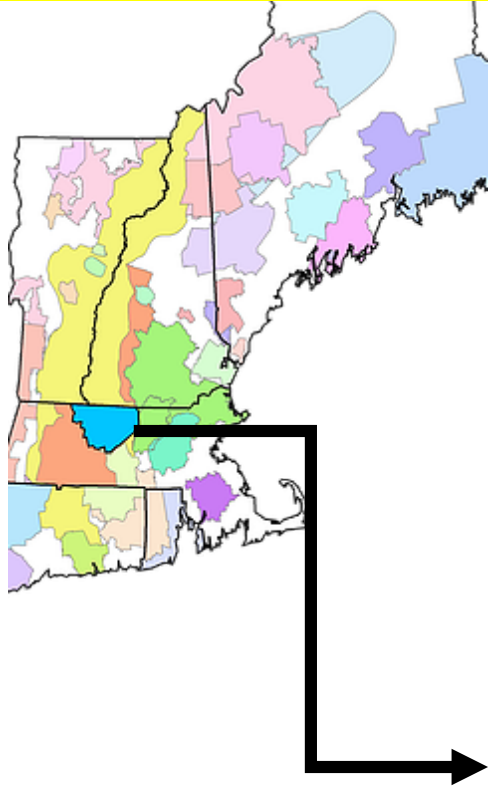


# CORE FUNCTIONS



- Facilitating landscape-scale conservation
- Building municipal capacity
- Organizing landowner outreach activities

# CORE FUNCTIONS



UMassAmherst

**DEPARTMENT OF ENVIRONMENTAL CONSERVATION**

UMass Amherst | College of Natural Sciences | School of Earth and Sustainability



- Facilitating landscape-scale conservation
- Building municipal capacity
- Organizing landowner outreach activities

# MUNICIPAL CAPACITY BUILDING



**Free Event, Free Lunch!** An event for municipal volunteers interested in open space protection.

**Sponsored by:**  
The North Quabbin Regional  
Landscape Partnership | Mount  
Grace Land Conservation Trust |  
Sudbury Valley Trustees |  
Nashua River Watershed  
Association | UMass Amherst |  
MassLIFT AmeriCorps

## 2013 Massachusetts OPEN SPACE CONFERENCE

**Saturday, June 8, 2013 | 10 am-3 pm\***  
Oakmont Regional High School  
Ashburnham, MA  
\*Sign-In Starts at 9:30 am

To Register: email Andrea at [conservationist\\_ameri corps@mountgrace.org](mailto:conservationist_ameri corps@mountgrace.org)  
or call (978) 248-2055 x21.

Indicate your three workshops

Welcome to the 3rd Biennial  
Massachusetts  
Open Space  
Conference!

Saturday, May 9, 2015  
Overlook Middle School  
Ashburnham, MA



## SAVE THE DATE!

Saturday, April 27th 2019 Mount Wachusett Community College  
9:00 AM—3:30 PM 444 Green St. Gardner, MA 01440

**Register Today**

## 2019 MA Open Space Conference

Join us for the fourth state-wide gathering for municipal Open Space Committee members, volunteers and others involved in the development and implementation of community-based conservation planning and projects.

Twelve peer-led, discussion-based workshops will cover a variety of topics including:

- Adopting and utilizing the Community Preservation Act (CPA)
- Writing and renewing Open Space and Recreation Plans, and
- Applying for the Municipal Vulnerability Preparedness (MVP) program
- Resources for funding your projects

This event is intended to be an informal opportunity for those interested in protecting open space to share experiences and resources, build partnerships, and return home with an increased capacity to successfully facilitate land conservation projects through planning, outreach, and stewardship.

This **FREE** conference will include **LUNCH**  
and a **RAFFLE** of field tools and outdoor gear

For more information, please contact Michael McGrath  
by email at [conservationist\\_ameri corps@mountgrace.org](mailto:conservationist_ameri corps@mountgrace.org)  
or by phone at (978) 248-2055 x 24.

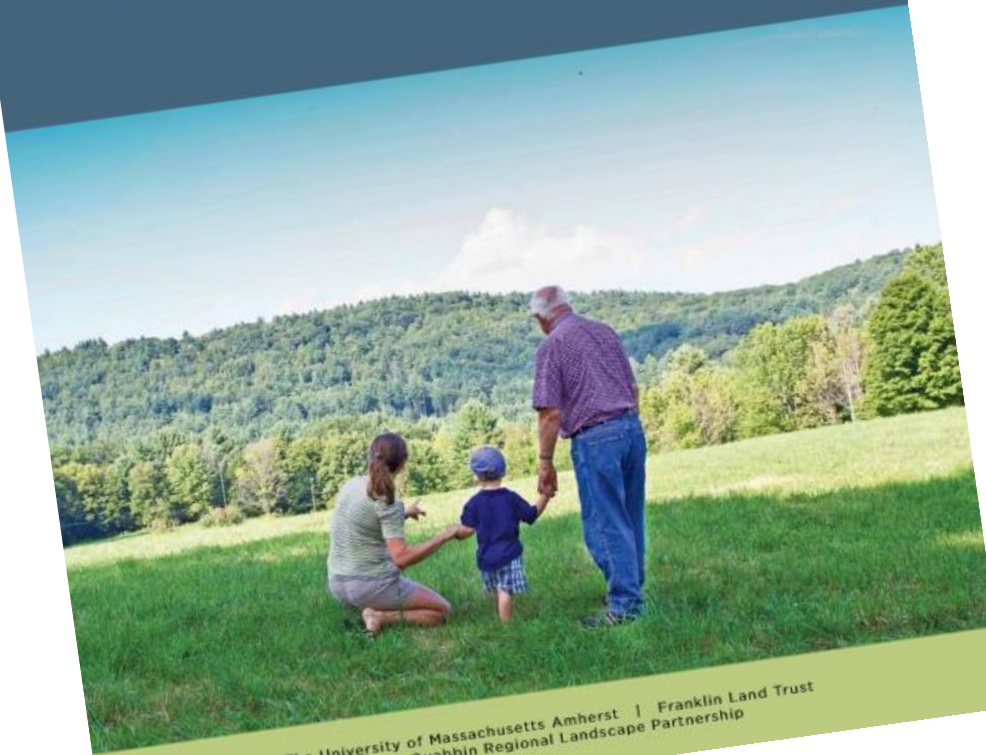
This event is organized by TerraCorps—AmeriCorps members serving at regional land trusts across the Commonwealth  
and the Open Space Committees of Athol, Northfield, Petersham, and Phillipston.



# LANDOWNER OUTREACH

## Your Land, Your Legacy

Deciding the Future of Your Land to  
Meet the Needs of You and Your Family



The University of Massachusetts Amherst | Franklin Land Trust  
North Quabbin Regional Landscape Partnership



# LANDOWNER OUTREACH

PLEASE JOIN US!

SATURDAY JUNE 16TH

## Women in the Woods

*An opportunity to walk and talk with other women woodland owners*



Saturday June 16th

10am-1pm

586 Briggs Road, Athol

LUNCH PROVIDED

-all ages welcome-

Please RSVP by  
Wednesday June 13th to  
Sarah at  
[wells@mountgrace.org](mailto:wells@mountgrace.org) OR  
978-248-2055 x23

Join us at Susie Feldman's 300+ acre  
Cutthroat Brook Tree Farm in Athol

- Walk around the brand-new Forest Learning Loop, an interactive trail designed by Susie
- Hear about Susie's habitat management projects
- Connect with other women interested in land management and conservation





# LANDOWNER OUTREACH





